



# Strengthening Learning

# Strengthening Lives

James Nottingham is regarded by many as one of the most engaging and thought-provoking presenters in the world of education. He brings rare clarity and insight to research evidence; real-life examples that inspire and guide teachers and leaders; and a sense of story and humour that makes learning so much more memorable and sustainable.

James's ability to engage, challenge, and amuse means he can hold the attention of thousands of delegates throughout a whole day event, as well as provide the perfect opening or closing keynote speech at national and international conferences.

'James Nottingham will help you navigate the world of educational concepts and research with a wonderful blend of clarity and good humour.'

**PROFESSOR CAROL DWECK**

'James Nottingham has the skills of explaining the complex in a way which is accessible and inviting. He is challenging yet encouraging. The examples of how it could be and the insights into what success looks like will leave you wanting to do things differently without a bag of guilt to weigh you down.'

**PROFESSOR MICK WATERS**

'James Nottingham has developed a rare skill for blending arresting anecdotes, hard-edged research and practical advice into a truly compelling narrative.'

**PROFESSOR BARRY HYMER**



## James Nottingham, FRSA

Founder & executive director at Challenging Learning

25 staff in six countries

Created the Learning Pit®

Co-founder of P4C.com

Author of ten books

Fellow of the Royal Society of Arts



## Presentations by James Nottingham

James Nottingham's experience and insights are particularly relevant to teachers, leaders, and support staff involved in the education of 3-19-year-olds and adults. He tailor-makes every presentation to fit the context, drawing upon the following themes:

From his ten books:

1. Challenge
2. Dialogue
3. Early Childhood
4. Efficacy (Collective & Self)
5. Feedback
6. Growth Mindset
7. Learning to Learn
8. Philosophy for Children (P4C)
9. Progress & Achievement
10. Questioning
11. Surface to Deep Learning
12. The Learning Pit®

Other areas of expertise:

- Flipped Learning
- Leadership
- SOLO Taxonomy
- Visible Learning®

Recent keynote titles include:

- Understanding the ASK Model as a way to **develop holistic education**
- Enhancing classroom talk to **improve communication & confidence**
- How cognitive conflict can be used to **strengthen learning in STEM subjects**
- Data demands judgement – understanding how to **use effect sizes wisely**
- Enhancing efficacy (self & collective) to **boost student resilience and wellbeing**
- Improving the feedback process to **boost achievement and progress**
- It's all about implementation – ensuring that **growth mindset and Visible Learning** live up to their reputation
- Guiding students through the Learning Pit® to **address the needs of all learners**
- How positive attitudes towards mistakes and failure **build a safe, engaging & inviting learning culture**
- Using the SOLO taxonomy to **narrow achievement gaps**

Please note these lists are not exhaustive nor do they come with a script. The examples James uses and the evidence of impact he draws attention to is always selected to perfectly match context, timing, and intended outcomes.

## Biography

James Nottingham is a Fellow of the Royal Society of Arts, an award granted for making outstanding achievements to social progress and development, and is included in the Future 500, a “definitive list of the UK’s most forward thinking and creative innovators”. He is best-known for creating the Learning Pit®, a world-renowned model for enhancing curiosity, determination and strategy; and is also the author of ten books about teaching, learning, and leadership. He has been a teaching assistant, teacher, and leader in schools in primary, middle, and secondary schools in the UK, as well as a factory worker, pig farmer, and lifeguard trainer.

In 2006, he created the company Challenging Learning which now employs 25 full-time staff in six countries, including Australia. He splits his time between leading his board of directors; designing and presenting professional learning; developing improved pedagogies based on the most up-to-date and compelling research; writing books; running demonstration lessons; and enjoying family life in the Scottish borders.

An extended biography, together with profile images, can be viewed at [bit.ly/AboutJamesNottingham](http://bit.ly/AboutJamesNottingham)

### Notable Keynotes & Consultancy

- Growth Mindset Conference Tours with Carol Dweck, 2010, 2012, 2014, 2016, 2019
- New Zealand Principals Foundation, Hamilton, NZ, 2014, 2016 (Keynotes)
- Annual Visible Learning conferences, Brisbane 2015, San Francisco 2017 & Chicago 2018 (Keynotes)
- Association of Independent Schools, National Conferences 2014, 2015, 2016, 2017 (Keynotes)
- NSW Secondary Principals Conference, Blue Mountains, 2016 & 2017 (Keynotes)
- Waikato Principals Association, Hamilton, NZ, 2017, 2018, 2019 (All day Seminars)
- Better Education Conferences, Perth, WA, 2016, 2017 (Keynotes)
- Utbildningsstyrelsen, The Finnish National Agency for Education, Sept 2018 (All day Seminar)
- St. James Assiniboia SD & Louis Riel SD (3000 staff), Winnipeg, Canada, January 2019 (All Day)



## Consultancy Options

James leads a team of 25 full-time consultants, researchers, and office staff in six countries, including Australia. Together, they provide the following approaches to professional learning for teachers, leaders, administrators, and support staff:

### Remote Learning

- Our virtual offer extends to keynote speeches from James Nottingham; webinars from all consultants in the Challenging Learning team; and coaching for individuals and small teams.
- The professional fee we charge for virtual delivery is between 50-70% of our on-site fees, with no charge for accommodation or other expenses.
- Virtual delivery can be booked right from the outset or kept as a back-up plan in case of travel restrictions. This allows you to book with confidence, knowing that Professional Learning will take place on your chosen date(s).

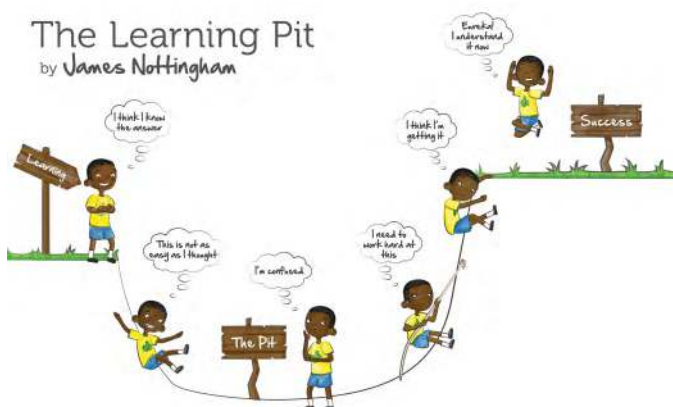
Read more about remote learning at [bit.ly/CLremote](http://bit.ly/CLremote)

### On Site

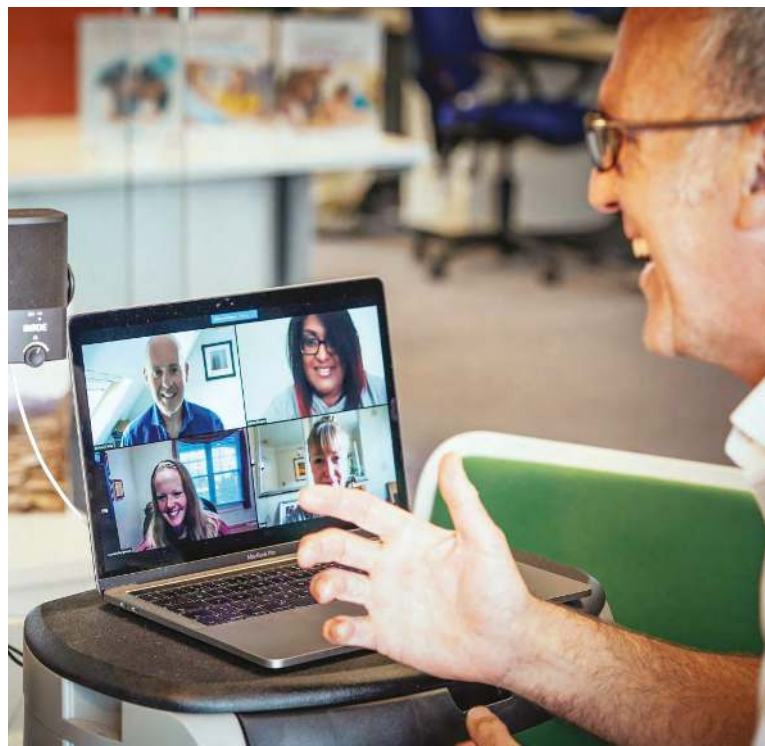
- Keynotes - regarded as some of the most effective, engaging and inspirational presentations in the world of education, a keynote by James Nottingham will typically run for 60-75 minutes with an optional 15 minutes Q&A at the end.
- Workshops - can be commissioned as one-off events lasting anything between 90 minutes and 6 hours or booked as a series of events to allow for action learning and reflection in between.
- Demonstration Lessons – give us any age and number of students, invite as many staff to observe as you would like, and let us show you how Challenging Learning approaches help deepen and extend learning.

During all on-site professional learning, we encourage staff to interact by asking questions, responding to colleagues, and engaging in careful-chosen activities that demonstrate how key pedagogical ideas work in practice.

Read more about our on-site consultancy at [bit.ly/CLconsultancy](http://bit.ly/CLconsultancy)



[www.challenginglearning.com](http://www.challenginglearning.com)



### Progress Visits

- Through learning walks, interviews, and a review of student learning data, we prepare a written report showing progress towards your priorities.
- Our team create a summary of learning outcomes that can be shared with other stakeholders and used to guide decisions.
- No politics are involved. Instead, a progress visit places your context alongside international best practice and research data.

### Challenging Learning Process

- The most significant and sustainable improvements come with our Challenging Learning Process (CLP). It improves staff engagement and student learning; strengthens learning culture; and leads to improved use of feedback, questioning and dialogue
- The CLP is a process, not a program. There are no pre-determined programmes or scripts. Our team begin by understanding your context and strengths, and then help you to fine-tune what you already do
- Change is embedded at every level: leaders, coaches, teachers, support staff and parents. It works with single schools or colleges; groups of schools or nurseries; and across a whole cluster of schools. Currently, there are 400 schools, 200 pre-schools, and 27 colleges strengthening their learning through a CLP

Read more about the Challenging Learning Process at [bit.ly/ChallengingLearningProcess](http://bit.ly/ChallengingLearningProcess)

